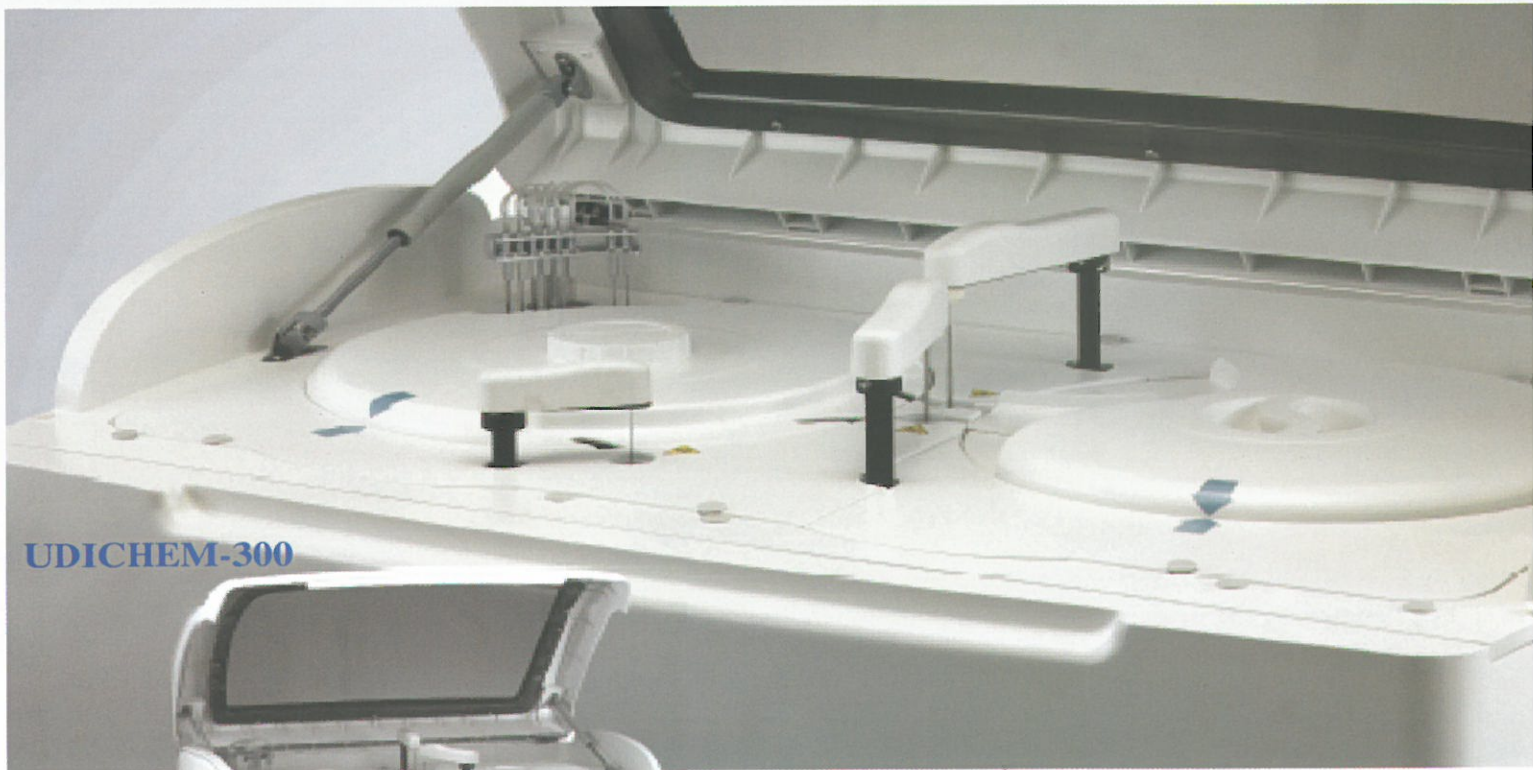


UDI

UNITED DIAGNOSTICS INDUSTRY

UDICHEM-300

Fully Automated Chemistry Analyzer



UDICHEM-300



- Random access, 300 tests per hour
- Dual-unattached durable ceramic syringes
- Unattached probe, high-performance mixer
- Select best test point by reaction curve, create new factor automatically
- On board refrigeration

CE

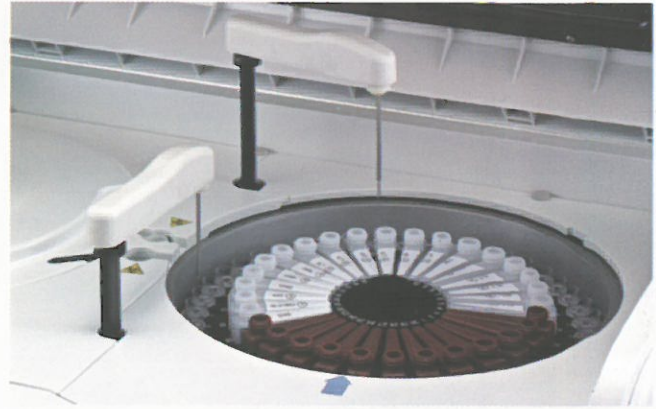


www.udignost.com

UDICHEM-300

Accurate Sampling (Sample/Reagent) System

- Collision protection
- Liquid level detection
- Internal and external probe washing
- Probe depth adjustment automatically
- Absence of cross contamination
- Optimal homogenization in minimum time to get accurate result
- Mixing immediately after dispensing of sample and the second reagent



Multi-function Sample/reagent tray

- 60 reagent positions support 25 mL, 50 mL reagent bottle type.
- 45 sample positions including routine, stat, control and standard
- Various primary tubes and special cups can be used
- Up to 20 virtual samples tray can be programmed
- 24 hours nonstop cooling system with peltier element and circular Water



Reaction Tray Assembly

- Reaction Disk: 120 semi-permanent plastic cuvettes
- Reaction Volume: 180-500 μ L.
- Operating temperature: 37 $^{\circ}$ C, Temperature fluctuation: \pm 0.1 $^{\circ}$ C



Dynamic and real time display of running status

- Running status of reagent tray, sample tray and reaction tray
- Real time monitoring of reagent residual volume
- Intelligent carry over setting to adjust test sequence, STAT test priority
- Probe depth adjustment automatically
- Real time monitoring of reaction curve
- Real time diagnosis of system working status

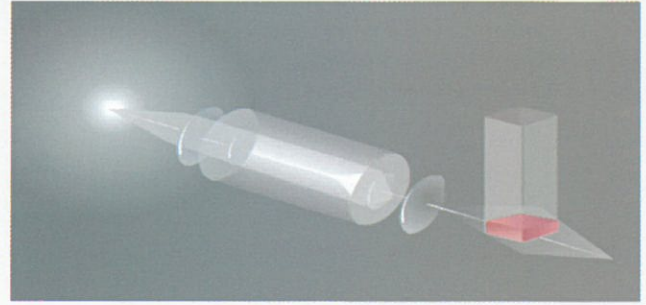


✓ *Your Best Choice for the Future*

Fully Automated Chemistry Analyzer

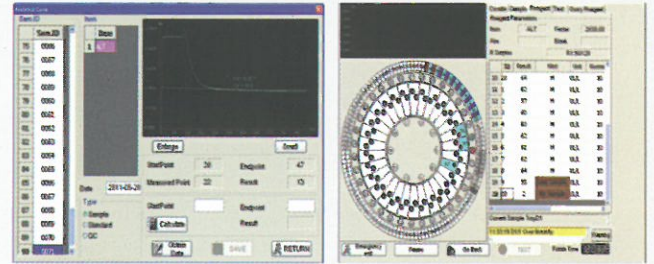
Stable Optical System

- High accurate, close, static State reversed optical system
- 10 wavelengths
- Spot photometry with high speed digital transmission system
- High quality light source with water cooling ensure 2000 hours lifespan



User-friendly & Multifunctional Software

- Running status of reagent tray sample tray and reaction tray
- Real time monitoring of reagent residual volume
- Real time monitoring of reaction curve



Efficient Washing System

- Eight steps auto-washing System with detergent and carm deion-water To ensure Cuvettes Clean and decrease Cross Contamination
- 120 reaction Cuvettes located in a constant temperature incubator
- Low consumption (180ul minimum) open reagent design

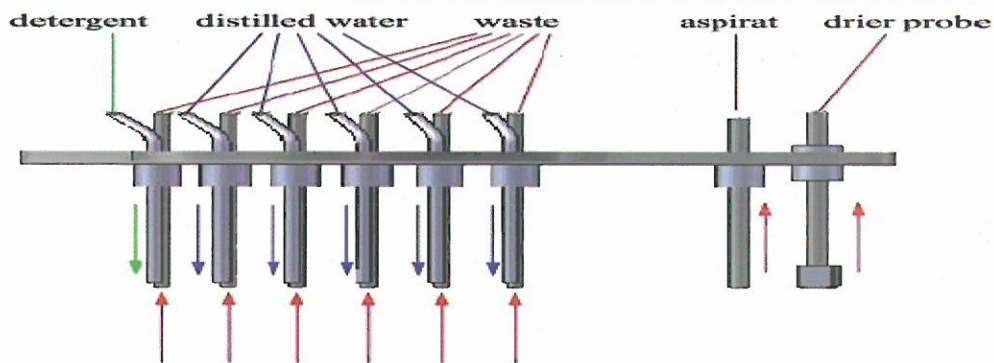
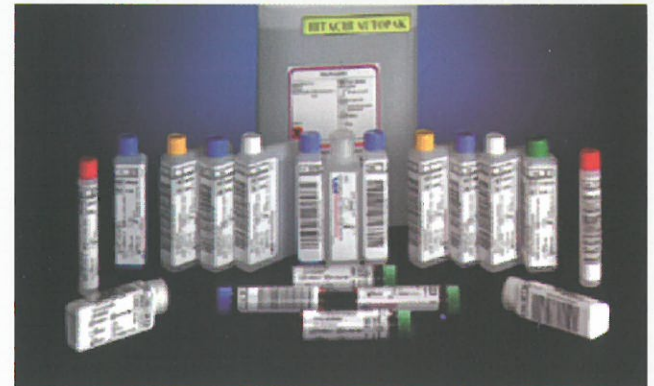


Figure 1-7

Wash station for stirrer: After stirring the solution in cuvettes the stirrer rotates to the position for cleaning.

Wash station for reagent probe: Rinse the internal and external of reagent probe using distilled water.

Wash station for sample probe: Rinse the internal and external of sample probe using distilled water.



Certified to ISO 9001:2008

UDICHEM-300

Specifications

Assay methods: End Point, Kinetic, Fix time etc.

Principle: Photoelectric Colorimetry

Light Source: Halogen lamp 12V/20W

Photometry range: 0-3.2 Abs

Resolution: 0.0001Abs

Wavelength: 10 wavelengths optional (340nm~800nm)

Throughput: 300tests/hour

Reagent tray: 59 reagent positions, 1 detergent position

Sample tray: 45sample positions, including detergent, standard, QC, STAT positions

Reaction tray: 120 reaction Cuvettes

Sample volume: 2~100ul, with 0.1 ul increment

Reagent volume: R1:10~500uL, R2: 10~500uL, with 0.5uL increment

Minimum reaction volume: 180uL

Maximum reaction time: 10 minutes

Water Consumption: 6L/hour under working status

Clean unit: 8-step auto-washing system with detergent and 37⁰C water

Calibration: Calibration reset, select best test point by reaction curve, no need second calibration Line/bon-line; multi-standards assay

Control rules: Westgard multi-rule, Cumulative sum check, twin plot
3 level controls for each item, analyzing and printing QC analysis diagram

Temperature control: incubator 37±0.1⁰C

Power supply: AC110/230(1±10%)V,50/60Hz,500VA

Ambient: Operating temperature : 10~30⁰C

Relative humidity: ≤85%

Atmospheric pressure: 86~106kPa

Features

↻ 24 hour non-stop water cycle cooling system to ensure reagent at 2-8⁰C

↻ Dual-unattached durable ceramic syringes to ensure accuracy & precision

↻ Collision protection in both vertical and horizontal directions, stop & alarm automatically once touching barrier, not affect former tests

↻ Automatic eligible cuvettes detection & selection

↻ Select best test point by reaction curve, create new factor automatically

↻ High accurate optical system

↻ Support LIS interface



United Diagnostics Industry

Plant: Tel: +966 3 812 2004/812 3055 Fax +966 3 812 1704

Sales Offices:

Dammam: +966 3 822 3122 Fax+ +966 3 822 4330

Jeddah: Tel: +966 2 6720077 Fax: +966 2 6712848

Abha: Tel: +966 7 2206433 Fax: +966 7 2208557

Email: export@udignost.com



Certified to ISO 9001:2008

Riyadh: Tel: +966 1 4157370 Fax: +966 1 214 1357

Medina: Tel & Fax: +966 4 8421495

Kingdom of Saudi Arabia - Web: www.udignost.com